



gelish®
product
catalog



DONE RIGHT. FROM THE START.

As nail artists ourselves, we understand that nothing is more important than the tools of our craft and nothing is more challenging than product inconsistencies. It has been and always will be that quality is our #1 priority.

Gelish® was the first brush-in-bottle gel polish ever invented. The US and International patented formulation proves that fact.

The fact that millions and millions of bottles have been sold to—and reordered again and again by—thousands of salons is further proof. So, the fact is, the innovative Gelish® system, still the best on the market no matter who else followed, continues as the one most trusted by nail techs worldwide.

Our success is measured by your success. We are committed to you, the nail technician, to provide the best products, to share our knowledge through unprecedented education, therefore developing long lasting customer loyalty.



Danny Haile - CEO & Founder

THE GELISH® DIFFERENCE

What makes the patented Gelish® formula unique is unlike other brush-on gels, Gelish® applies like a polish for easier application, smoother flow, better product leveling for a streak free and more complete curing for longer, chip free wear.



CAP

Ergonomically designed cap fits comfortably in the hand for hours of strain free services.

BRUSH

Laser-cut domed bristle brush gives the smoothest application yet and provides better control near the cuticle. Increased bristle count, exclusively salon tested to pick up the ideal amount of product, ensures full coverage and streak-free application.

FORMULA

Better product flow for a perfect finish every time.

COLOR BAND

Hate searching for the right Gelish shade? With the shoulder color ring, find each shade easily within your drawer. Not to mention, the larger color dot on the shrink sleeve helps with on-shelf identification.

BOTTLE

Matches the Morgan Taylor® bottle to create a true family.

LARGER COLOR DOT

The larger color dot makes it even easier to identify shades on the shelf or in your drawer.



fall in love with Gelish®

GELISH® IS THE GOLD STANDARD OF SOAK-OFF GEL POLISH.

It is and will always be the original soak-off gel polish and because of this it has become the trusted, go-to brand for nail technicians.

And now, the best is even better with an enhanced formulation for better stability, more accurate color, and improved product flow for an even easier, smoother laydown. The sleek Gelish® bottle provides better on-shelf and in-salon color designation with its larger color dot and color bar that can be seen from any angle. The custom brush provides for better control, feel, and a streak free application. This is the gold standard as you've never seen it before.

colors of Gelish®



GELISH® SOAK-OFF GEL POLISH
& GELISH® XPRESS DIP POWDER

All Gelish® colors available
in 15 mL - 0.5 Fl. Oz.

All Gelish® Xpress Dip N Brush
available in 43 g - 1.5 Oz.

† Also available in 105 g - 3.7 Oz



1110999 - SH*
1620999 - SH*†
SHEER & SILK



1110998 - SH*
1620998 - SH*†
TUTUS & TIGHTS



1110812 - SH*
1620812 - SH*†
SIMPLE SHEER



1110420 - SH*
1620420 - SH*†
CUDDLE BUG



1110421 - SH*
1620421 - SH*†
SWEET ON YOU



1110876 - C*
1620876 - C*†
ARCTIC FREEZE



1620997 - SH*†
CLEAR AS DAY



1110811 - C*
1620811 - C*†
SHEEK WHITE



1110265 - C*
1620265 - C*†
MAGIC WITHIN



1110853 - SH, S
CHAMPAGNE



1110933 - E*
1620933 - E*†
LET'S GET BUSY



1110001 - SH, C*
1620001 - SH, C*†
HEAVEN SENT
Formerly Little Princess



1110377 - C
BARELY BUFF



1110006 - SH, C*
1620006 - SH, C*†
SIMPLY
IRRESISTIBLE
Formerly Sweet Dream



1110944 - C*
1620944 - C*†
DO I LOOK BUFF?



1110187 - C*
1620187 - C*†
TAN MY HIDE



1110203 - C*
1620203 - C*†
PRIM-ROSE
AND PROPER



1110878 - C*
1620878 - C*†
TAUPE MODEL



1110854 - C*
1620854 - C*†
NEED A TAN



1110928 - C*
1620928 - C*†
SHE'S MY BEAUTY



1110286 - S
HIDDEN IDENTITY



1110341 - C*
1620341 - C*†
GARDENIA
MY HEART



1110342 - C*
1620342 - C*†
I FEEL
FLOWER-FUL



1110298 - C*
1620298 - C*†
CURLS & PEARLS



1110840 - P*
1620840 - P*†
TAFFETA



1110814 - SH, S*
1620814 - SH, S*†
AMBIENCE



1110254 - C*
1620254 - C*†
ALL ABOUT
THE POUT



1110813 - P*
1620813 - P*†
FOREVER BEAUTY



1110262 - C*
1620262 - C*†
ONCE UPON
A MANI



1110815 - S*
1620815 - S*†
LIGHT ELEGANT



1110344 - P*
1620344 - P*†
FOLLOW THE
PETALS



1110287 - S
KISS KISS



1110345 - C*
1620345 - C*†
STRIKE A POSIE



1110857 - C
PINK SMOOTHIE



1110908 - C*
1620908 - C*†
YOU'RE SO SWEET
YOU'RE GIVING ME
A TOOTHACHE



1110858 - C*
1620858 - C*†
GO GIRL



1110178 - N, C*
1620178 - N, C*†
LOOK AT YOU,
PINK-A-LUJI



1110916 - N, C*
1620916 - N, C*†
MAKE YOU
BLINK PINK



1110835 - G*
1620835 - G*†
JUNE BRIDE



1110859 - C*
1620859 - C*†
IT'S A LILY



1110221 - P*
1620221 - P*†
B-GIRL STYLE



1110295 - P*
1620295 - P*†
ALL THE
QUEEN'S BLING



1110290 - C
PICTURE PUR-FECT



1110340 - C*
1620340 - C*†
MERCI BOUQUET



1110180 - N, C*
1620180 - N, C*†
TOKYO A GO GO



1110936 - N, C*
1620936 - N, C*†
TAHITI HOTTIE



1110914 - N, C*
1620914 - N, C*†
YOU GLARE,
I GLOW



1110321 - G
#PARTYGIRL-
PROBLEMS



1110824 - P
STAR BURST



1110866 - C*
1620866 - C*†
PLUM AND DONE



1110880 - S
COCKTAIL PARTY
DRAMA



1110864 - P*
1620864 - P*†
DIVA



1110828 - C*
1620828 - C*†
BELLA'S VAMPIRE



1110036 - S*
1620036 - S*†
SEAL THE DEAL



1110920 - C*
1620920 - C*†
LOVE ME
LIKE A VAMP



1110845 - S*
1620845 - S*†
SAMURAI



1110852 - E*
1620852 - E*†
LOTS OF DOTS



1110240 - C*
1620240 - C*†
FIGURE 8S &
HEARTBREAKS



1110186 - P*
1620186 - P*†
TEXAS ME LATER



1110817 - C*
1620817 - C*†
EXHALE



1110191 - C*
1620191 - C*†
A LITTLE NAUGHTY



1110860 - P*
1620860 - P*†
TUTTI FRUTTI



1110896 - N, C*
1620896 - N, C*†
CARNAVAL
HANGOVER



1110173 - P*
1620173 - P*†
AMOUR COLOR
PLEASE



1110261 - C*
1620261 - C*†
ONE TOUGH
PRINCESS



1110022 - C*
1620022 - C*†
PRETTIER IN PINK
Formerly All Outlined Up



1110181 - N, C*
1620181 - N, C*†
POP-ARAZZI POSE



1110202 - C*
1620202 - C*†
DON'T PANSY
AROUND



1110819 - C*
1620819 - C*†
GOSSIP GIRL



1110257 - N, C*
1620257 - N, C*†
WOKE UP
THIS WAY



1110895 - N, C*
1620895 - N, C*†
SHAKE IT TILL
YOU SAMBA



1110818 - S
PASSION



1110222 - P*
1620222 - P*†
HIP HOT CORAL



1110255 - N, S
ME, MYSELF-IE,
AND I



1110935 - N, C*
1620935 - N, C*†
PACIFIC SUNSET



1110322 - P*
1620322 - P*†
ROSE-Y CHEEKS



1110297 - C*
1620297 - C*†
BEAUTY MARKS
THE SPOT



1110176 - P*
1620176 - P*†
CANCEN WE
DANCE?



1110182 - N, C*
1620182 - N, C*†
MANGA-ROUND
WITH ME



1110886 - C*
1620886 - C*†
A PETAL FOR
YOUR THOUGHTS



1110915 - N, C*
1620915 - N, C*†
BRIGHTS HAVE
MORE FUN



1110885 - C*
1620885 - C*†
SWEET
MORNING DEW



1110917 - N, C*
1620917 - N, C*†
I'M BRIGHTER
THAN YOU



1110343 - C*
1620343 - C*†
YOUNG, WILD, &
FREE-SIA



1110934 - N, C*
1620934 - N, C*†
ROCKIN' THE REEF



1110894 - N, C*
1620894 - N, C*†
TIKI TIKI LARANGA



1110821 - C*
1620821 - C*†
TIGER BLOSSOM



1110875 - M*
1620875 - M*†
SUNRISE AND
THE CITY



1110804 - C*
1620804 - C*†
FIRE CRACKER



1110144 - C*
1620144 - C*†
SCANDALOUS



1110861 - C*
1620861 - C*†
HOT ROD RED



1110189 - P*
1620189 - P*†
RUBY TWO-SHOES

GELISH® COLOR GUIDE

C - CREME | E - EFFECT | G - GLITTER | SH - SHEER | S - SHIMMER | M - METALLIC | N - NEON
P - PEARL | ■ - DIP MATCH | * - MORGAN TAYLOR® MATCH



essentials

EVERY PRODUCT. EVERY APPLICATION. START TO FINISH.



*BLOOMING GEL



PH BOND NAIL PREP

Used on natural nails to balance the pH and remove any surface oils.

1140002 15 mL - 0.5 Fl. Oz.

FOUNDATION SOAK-OFF BASE GEL

Creates the adhesive bond between the nail plate and gel products without damaging the nail plate. Works as a base for Gelish® Structure or Gelish® Soak-Off Gel Polish. Cures: 5 seconds in LED Light; 1 minute in UV Light.

1310002 15 mL - 0.5 Fl. Oz.

TOP IT OFF SOAK-OFF SEALER GEL

Seals your Gelish® Soak-Off Gel Polish to a high shine or matte, satin finish that will not chip or peel. Removes with Soak-Off Gel Remover. Cures: 30 seconds in LED Light; 2 minutes in UV Light.

1310003 15 mL - 0.5 Fl. Oz.

1140001 MATTE 15 mL - 0.5 Fl. Oz.

NOURISH CUTICLE OIL

Rehydrates and restores essential oils in cuticles and skin surrounding the nail with a unique blend of Grapeseed Oil, Kukui Nut Oil, Sesame & Vitamin E.

1140000 15 mL - 0.5 Fl. Oz.

NOURISH WITH HYALURONIC ACID

Helps lock in moisture from the surrounding environment and dermis to fully hydrate skin and soften cuticles.

1148019 - 15mL - 0.5 Fl. Oz.

NO CLEANSE TOP COAT

Seals your Gelish® Soak-Off Gel Polish to a high shine finish that will not chip or peel. Removes with Soak-Off Gel Remover. Cures: 60 seconds in LED Light; 3 minutes in UV Light.

1148008 15 mL - 0.5 Fl. Oz.

BLOOMING GEL SOAK-OFF GEL

Create marble and watercolor looks within minutes! Easy application and no mess. Cures in 30 seconds in LED Light; 2 minutes in UV Light.

1148012 15 mL - 0.5 Fl. Oz.



VITAGEL® LED/UV LIGHT CURED NAIL STRENGTHENER GEL

Intensive soft gel formulated with vitamins A, B5 and E that promotes ongoing absorption of keratin and nutrients into the nail bed for up to 14 days. Strengthens & protects natural nails. Perfect for maintenance. Eliminates peeling of the natural nail and gives you a strengthening base for any nail lacquer.

01150 Strength 15 mL - 0.5 Fl. Oz.
01152 Recovery 15 mL - 0.5 Fl. Oz.

essentials

EVERY PRODUCT. EVERY APPLICATION. START TO FINISH.



STRUCTURE SOAK-OFF NAIL STRENGTHENER

Reinforces strength, enhances nail or repairs damaged nail plate. Removes with Soak-Off Gel Remover. Cures: 30 seconds in LED Light; 2 minutes in UV Light.

CLEAR GEL JARS

01247	15 mL - 0.5 Fl. Oz.
01221	50 mL - 1.6 Fl. Oz.

BRUSH-ON

1140004	Translucent Pink	15 mL - 0.5 Fl. Oz.
1140005	Cover Pink	15 mL - 0.5 Fl. Oz.
1140006	Clear	15 mL - 0.5 Fl. Oz.

BRUSH-ON BUILDER GEL

1148021	Clear	15 mL - 0.5 Fl. Oz.
---------	-------	---------------------



FOUNDATION FLEX SOAK-OFF GEL POLISH

Soak-off rubber base gel with flexible protection and perfection with a barely-there feel. Cures in 30 seconds in LED Light; 2 minutes in UV Light.

1148015	Clear	15 mL - 0.5 Fl. Oz.
1148016	Light Pink	15 mL - 0.5 Fl. Oz.
1148017	Light Nude	15 mL - 0.5 Fl. Oz.
1148018	Cover Beige	15 mL - 0.5 Fl. Oz.



See page 8 for
Kits featuring
Gelish® Essentials.



removers

CLEANSERS, REMOVERS AND ACCESSORIES

NAIL SURFACE CLEANSE

Especially formulated to work with Gelish® Top It Off. Assures a high shine finish without any tacky residue or without drying to the skin.

01250	120 mL - 4 Fl. Oz.
01251	480 mL - 16 Fl. Oz.
01228	960 mL - 32 Fl. Oz.



NAIL POLISH REMOVER

Gently removes polish in minutes while conditioning the nails and skin with Vitamin E and Aloe.

01385	120 mL - 4 Fl. Oz.
01386	480 mL - 16 Fl. Oz.

WRAP IT OFF™ FOIL WRAP REMOVAL SYSTEM

Simple, easy & quick gel polish removal at your fingertips.

Sturdy pieces of high-quality foil with a cotton pad adhered to the foil makes taking off gel polish quick and effortless. Lightly buff surface of gel polish and saturate a Gelish® Wrap It Off™ Foil Wrap with Gelish® Artificial Nail Remover; wrap around each nail to soak for 10-15 minutes to remove gel polish. Lightly buff natural nail bed to remove any remaining gel.

01920	100 Count
-------	-----------

ARTIFICIAL NAIL REMOVER

Designed to remove Gelish® Soak-Off Gel Polish in 10 minutes or less, with conditioning additives that keep the skin from drying, and maintain a healthy nail.

01248	120 mL - 4 Fl. Oz.
01249	480 mL - 16 Fl. Oz.
01229	960 mL - 32 Fl. Oz.



Wipes not shown at actual size

WIPE IT OFF™ LINT-FREE NAIL WIPES

Made of 100% soft and absorbent cotton, these lint-free nail wipes provide exceptional performance for all professional services. Ideal for removing nail lacquer and gel residue, and for cleaning acrylic and gel brushes, Gelish® Wipe It Off™ Lint-Free Nail Wipes are completely sanitary and textured for speedy and superior removal.

2 in. x 2 in. - 5 cm x 5 cm

01925	300 Count
-------	-----------



kits

PROFESSIONAL KITS FOR EVERY NEED



PRO KIT

INCLUDES: (1 EACH) 15 mL - 0.5 Fl. Oz. pH Bond, Foundation, Top It Off, Nourish, Hot Rod Red, Light Elegant; (1 EACH) 60 mL - 2 Fl. Oz. Nail Surface Cleanse, Artificial Nail Remover; Pro LED Light; Cuticle Pusher/Prep Tabs (50 count).

1121798 - US • 1121799 - EU • 1121800 - UK • 1121801 - AU



COMPLETE STARTER KIT

INCLUDES: MINI Basix Kit; (1 EACH) 15 mL - 0.5 Fl. Oz. Good Gossip, Gossip Girl; On The Go LED Curing Light.

1121764



MINI BASIX KIT

INCLUDES: (1 EACH) 9 mL - 0.3 Fl. Oz. Top It Off, Foundation, pH Bond, Nourish; (1) 60 mL - 2 Fl. Oz. each of Nail Surface Cleanse and Artificial Nail Remover; Mini Wooden File; Orangewood Stick; Plastic Pusher and Prep Pads.

1121755



FANTASTIC FOUR KIT

INCLUDES: (1 EACH) 15 mL - 0.5 Fl. Oz. Foundation, Top It Off, pH Bond, Nourish. 1121787



DYNAMIC DUO

INCLUDES: (1 EACH) 15 mL - 0.5 Fl. Oz. Foundation, Top It Off.

1121503



MATTE & GLOSS DUO

INCLUDES: (1 EACH) 15 mL - 0.5 Fl. Oz. Top It Off, Matte Top It Off.

1121519











NEW
CAMERA
READY
TECHNOLOGY

 **FLASH ACTIVATED
BRILLIANT GLITTER**





Flash Glam™ Glitters are a 2-in-1 glitters that sparkle alone or are next level camera ready in front of a flash – a mani selfie in a bottle! Wear alone or pair with your other favorite shades for next level nail art!

-  Easy Application
-  Durability with up to 21 days of chip free wear
-  Vegan & Cruelty-Free
-  No Mess
-  Camera Flash Activated
-  Made in the USA

colors of Gelish® Flash Glam



STEP-BY-STEP APPLICATION

-  **1** After completing your Gelish® nail prep, apply **FLASH Glam™** gel color of choice. Cure for 30 seconds in the **18G** LED light and repeat for full coverage.
-  **2** Apply Gelish® **TOP IT OFF** and cure for 30 seconds.
-  **3** Cleanse using Gelish® **NAIL SURFACE CLEANSE** and a **WIPE IT OFF** lint-free wipe.
-  **4** Massage Gelish® **NOURISH** Cuticle Oil.

gelish[®] SOAK-OFF[®] GEL POLISH

PURE VELVET



Pure Velvet Gels are gorgeous multi-dimensional cat-eye glitters with a magnet-activated velvet effect. The velvet-like texture of these cat-eye gels gives an opulent glittering glow that cannot be achieved with any other existing nail technology. From soft, subtle waves to sharp, contrasting lines, the nail art capabilities are endless with the Gelish Pure Velvet Magnet Gels and the accompanying magnet that comes with each shade.

-  Easy Magic Wand
-  Vegan & Cruelty-Free
-  Up to 21 Days of Chip-Free Wear
-  LED Cured To Finish

colors of Gelish[®] Pure Velvet



STEP-BY-STEP APPLICATION



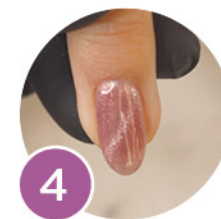
After completing your gelish nail prep, apply a coat of **GELISH FOUNDATION GEL**. Apply **PURE VELVET GEL** color of choice, cure for 30 seconds in the **18G LED LIGHT**.



Apply a second coat of **PURE VELVET GEL** color of choice and hold magnet over the top to create desired design. Cure for 30 seconds.



Apply gelish top it off and cure for 30 seconds. Cleanse using **GELISH NAIL SURFACE CLEANSE** and a **WIPE IT OFF** lint-free wipe.



Massage gelish **NOURISH Cuticle Oil** on to the surrounding skin. Pro tip: you can also use **MATTE TOP IT OFF** to create another style of nail art.

gelish[®] ART FORM GEL 2D TECHNOLOGY™

ONE STROKE TRUE COLOR NAIL ART GELS

ART FORM™ GELS

Introducing one-stroke nail art with Art Form™ Gels. Perfect opacity. LED cures to a perfect finish. No wrinkling, no marbling, no messy inhibition layer. Total artistic control. Bring definition to your artistry! Let nothing stand between you and your work of art. These 24 pigment-intense Art Form™ Gels, from primary to pastel and neon to glitter, blend together to create thousands of custom colors.

Ideal for putting fast artistic finishes on full color coverage Gelish® Soak-Off Polish and Gelish® PolyGel® Nail Enhancements!

Colors are 5 g - 0.17 oz sizes



colors of Gelish[®] Art Form

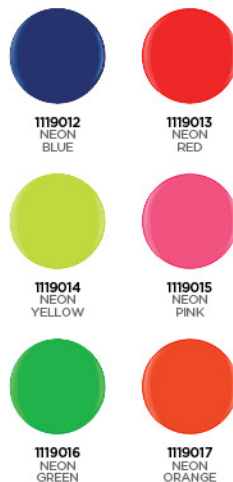
ESSENTIALS



PASTELS



NEONS



EFFECTS



ART FORM GEL COLOR GEL KITS

Used on natural nails to balance the pH and remove any surface oils.

- 1121794 **ESSENTIALS Kit** Includes 1 each: 1119000-1119005
Design must-haves for creating an entire spectrum of shades
- 1121795 **PASTELS Kit** Includes 1 each: 1119006-1119011
Ethereal hues for exceptionally sweet finishes.
- 1121796 **NEONS Kit** Includes 1 each: 1119012-1119017
Shades with the power to electrify your artistry!
- 1121797 **EFFECTS Kit** Includes 1 each: 1119018-1119023
Shimmering shades for artistry that shines above the rest!

Hard-Gel

A BREAKTHROUGH IN SPEED TECHNOLOGY

HARD-GEL LED GEL SYSTEM

Reveal elegance with thin natural looking nails perfect for everyday wear.

The pristine performance of these thick viscosity gels utilizes Gel Suspension Technology (GST) which assures total control and workability for the technician. The results are distinct and great for anyone. Gelish® Hard-Gel is easy to apply, cures in 30 seconds, out performs the competition and is versatile in wear for longer nail extensions, shorter nails or even toes.

LED Cured Gels bond to the natural nail using a fused keratin bonding system without the use of harsh acids for extreme retention to the nail plate. With vivid white, lucent clears, & radiant pinks that will define any look and stand apart from any other product. Gelish® Hard-Gels create a stylish natural looking enhancement sure to compliment any fashion.

01387	Gelish Hard Gel Pink Builder Gel	15 mL - 0.5 FL. Oz.
01388	Gelish Hard Gel Dark Pink Builder Gel	15 mL - 0.5 FL. Oz.
01389	Gelish Hard Gel White Builder Gel	15 mL - 0.5 FL. Oz.
01390	Gelish Hard Gel Clear Gel	15 mL - 0.5 FL. Oz.
01393	Gelish Hard Gel Clear Builder Gel	15 mL - 0.5 FL. Oz.
01397	Gelish Hard Gel Cover Pink Builder Gel	15 mL - 0.5 FL. Oz.



GEL BRUSHES

Our series of Gel Brushes are developed with the same highest quality as the Acrylic Brushes, but smaller. The compact handles provide ease and workability for the nail technician. Six different shapes and lengths provide versatility in application. Square shapes for the perfect pink and whites, ovals for overlays, and striper for finer art details.

MICRO STRIPER BRUSH

The finest, smallest detail brush perfect for nail art. **1168018**

MINI GEL STRIPER

Ideal for creating finer details on all forms of artwork. **01380**

GEL STRIPER

Ideal for creating stripes and lines, marbleizing and color dragging. **01381**

#6 GEL OVAL

The finer point on this brush is ideal for sculpting, overlays, and detailed applications. **01382**

#6 GEL SQUARE

The ideal brush for creating clean smile lines, wiping down inhibition layers and creating all forms of artwork. **01383**

#7 GEL SQUARE

Slightly larger for picking up more product. This brush is ideal for sculpting pink and white extensions. **01384**





THE FASTEST AND MOST PROFESSIONAL
NAIL ENHANCEMENTS EVER MADE



FLAWLESS NAILS AT LIGHT SPEED

SOFT GEL TIPS

The fastest and most professional nail enhancements ever made. The speed of applying pre-shaped full coverage Soft Gel Tips can't be beat combined with light speed curing of Gelish® Gel. Soft Gel Tips feel like your own nails...only better! Our tips are designed with a seamless contact area featuring Flexi-fit soft gel, mirroring the contour of the natural nail for a perfect fitting design with unmatched flexibility and durability. All while extending the strength to the center of the tip for a more break resistant design from arch to free edge. Instant style, length, strength on demand. You've never created nails with anything faster than this! Gelish® Soft Gel Tips deliver gorgeous, long lasting nails in record time, less than 20 minutes* for a full set. *When used in conjunction with 18G LED Lights.

1168103	Soft Gel Tips - Short Round	550 Count	1168095	Soft Gel Tips - Medium Round	550 Count
1168098	Soft Gel Tips - Medium Coffin	550 Count	1168096	Soft Gel Tips - Long Coffin	550 Count
1168160	Soft Gel Tips - Medium Stiletto	550 Count	1168097	Soft Gel Tips - Long Stiletto	550 Count
1168161	Soft Gel Tips - Medium Square	550 Count			



1. Size your tips. Apply Gelish® Tip Primer and Gelish® Soft Gel Tip Adhesive to Gelish® Soft Gel Tips. 2. Place and hold tip onto the nail. Flash cure using the Gelish® Touch LED Light. Repeat. 3. Cure all 5 nails for 60 seconds in the Gelish® 18G LED Light.* **FINISH** with gel color, gel top coat, dip powder, traditional lacquer, or bedazzle! *When used in conjunction with Gelish® 18G LED Lights.



SOFT GEL 550CT KIT

INCLUDES: (1 EACH) 15 mL - 0.5 FL. Oz. Tip Primer and Soft Gel Tip Adhesive, 1 MINI Touch LED Light and 550ct Nail Tip

- 1120071 Soft Gel Kit Short Round
- 1120072 Soft Gel Kit Medium Round
- 1120073 Soft Gel Kit Medium Coffin
- 1120074 Soft Gel Kit Long Coffin
- 1120075 Soft Gel Kit Medium Stiletto
- 1120076 Soft Gel Kit Long Stiletto
- 1120077 Soft Gel Kit Medium Square



SOFT GEL REFILL TIPS
Our tips are designed with a seamless contact area featuring Flexi-fit soft gel, mirroring the contour of the natural nail for a perfect fitting design with unmatched flexibility and durability.



TIP PRIMER

Non-Acid based primer for Gelish® Soft Gel Tips. Essential maximum adhesion promoter for Soft Gel Tips to the natural nail. Applied to both Soft Gel Tip and natural nail, prior to Soft Gel Tip Adhesive. Air dries.

1148009 15 mL - 0.5 Fl. Oz.



SOFT GEL TIP ADHESIVE

Formulated with Foundation Base Technology, the formula you trust for maximum adhesion. Non-damaging, LED Soak-Off formula for bubble-free maximum adhesion of Gelish® Soft Gel Tips. Reinforced molecular structure for exceptional seal and wear without lifting. Applied to Gelish® Soft Gel Tip after Gelish® Tip Primer. Flash Cure: 5 seconds in LED light; Full Cure: 30 seconds in Touch LED Light or 60 seconds in 18G LED Light. Soak-off for removal.

1148010 15 mL - 0.5 Fl. Oz.
1148011 5 mL - 0.17 Fl. Oz. (Jar)
1148014 15mL - 0.5 Fl. Oz. (Jar)
1148022 15mL - 0.5 Fl. Oz. (Tube)
1148023 30mL - 1 Fl. Oz. (Tube)



SOFT GEL DUO

INCLUDES: (1 EACH) 15 mL - 0.5 Fl. Oz. Tip Primer and Soft Gel Tip Adhesive.

1121802

Soft Gel Tips - Short Round - 50 Count					
1168148	Size 00	1168152	Size 3	1168156	Size 7
1168149	Size 0	1168153	Size 4	1168157	Size 8
1168150	Size 1	1168154	Size 5	1168158	Size 9
1168151	Size 2	1168155	Size 6		
Soft Gel Tips - Medium Round - 50 Count					
1168104	Size 00	1168108	Size 3	1168112	Size 7
1168105	Size 0	1168109	Size 4	1168113	Size 8
1168106	Size 1	1168110	Size 5	1168114	Size 9
1168107	Size 2	1168111	Size 6		
Soft Gel Tips - Medium Coffin - 50 Count					
1168137	Size 00	1168141	Size 3	1168145	Size 7
1168138	Size 0	1168142	Size 4	1168146	Size 8
1168139	Size 1	1168143	Size 5	1168147	Size 9
1168140	Size 2	1168144	Size 6		
Soft Gel Tips - Long Coffin - 50 Count					
1168115	Size 00	1168119	Size 3	1168123	Size 7
1168116	Size 0	1168120	Size 4	1168124	Size 8
1168117	Size 1	1168121	Size 5	1168125	Size 9
1168118	Size 2	1168122	Size 6		
Soft Gel Tips - Medium Stiletto - 50 Count					
1168173	Size 00	1168177	Size 3	1168181	Size 7
1168174	Size 0	1168178	Size 4	1168182	Size 8
1168175	Size 1	1168179	Size 5	1168183	Size 9
1168176	Size 2	1168180	Size 6		
Soft Gel Tips - Long Stiletto - 50 Count					
1168126	Size 00	1168130	Size 3	1168134	Size 7
1168127	Size 0	1168131	Size 4	1168135	Size 8
1168128	Size 1	1168132	Size 5	1168136	Size 9
1168129	Size 2	1168133	Size 6		
Soft Gel Tips - Medium Square - 50 Count					
1168184	Size 00	1168188	Size 3	1168192	Size 7
1168185	Size 0	1168189	Size 4	1168193	Size 8
1168186	Size 1	1168190	Size 5	1168194	Size 9
1168187	Size 2	1168191	Size 6		



TOUCH PORTABLE & RECHARGEABLE LED CURING LIGHT

Ideal for curing soft gel tips and quick gel nail repairs. Gelish® Touch LED takes application speed to another level. Integrate fast, even flash curing into your services with focused LED Beam technology to finish full sets in 20 minutes* or less or use for single gel curing.

- Touch Activated
- Ergonomic 360° Freedom
- 30 Second Cure
- 24 Hours of Battery
- Rechargeable
- 3 Watts
- Battery Charge Indicator
- USB Cable Included

1168099

*When used in conjunction with 18G LED Lights.



SOFT GEL BASIX KIT

INCLUDES: (1 EACH) 9 mL - 0.3 Fl. Oz. pH Bond, Tip Primer, Soft Gel Tip Adhesive, Nourish; (1 EACH) 60 mL - 2 Fl. Oz. Nail Surface Cleanse and Artificial Nail Remover; Mini Wooden File; Orangewood Stick; Plastic Pusher and Prep Tabs.

1224022



THE MOST NATURAL FEELING NAIL EXPERIENCE



**LIGHTER.
STRONGER.
EASIER.**

POLYGEL® BRAND NAIL ENHANCEMENT SYSTEM

PolyGel® Brand is an all-in-one formula for the perfect working consistency. No monomer, no mixing, no ratios.

The odorless formula allows you to work as fast or as long as you want. Tube dispensing allows you to use just what you need for no wasted product. Formulated using a game-changing polymer fusion, PolyGel® Brand's breakthrough TriPolymer Technology™ delivers gravity-defying performance for astonishingly easy, chase-free applications.

The unique putty-like viscosity ensures smooth, flawless nails and even color. PolyGel® Brand's formulation combines acrylic powder for strength in a gel base with photo initiators providing workability without the unpleasant monomer odor. And, the heavier-than-air TriPolymer fillings are 30% heavier than acrylic and hard gel fillings, which means they fall to the table for virtually no airborne dust.

*TriPolymer Technology = Oligomers from Gels; Polymers from Acrylics; Polymers from Lacquer

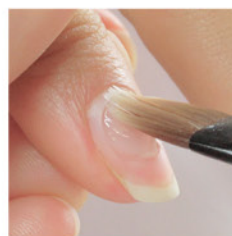


SQUEEZE SLICE ROLL



STEP 1:

Squeeze just the right amount of PolyGel® Brand Hybrid Nail Enhancement Gel out of the tube, slice product with your PolyTool®, Roll onto nail.



STEP 2:

Using your brush and a small amount of PolyGel® Brand Slip Solution shape product into place. Use with the Maestro Brush.



STEP 3:

Cure 60 seconds in 18G LED Light.



SLIP SOLUTION

Not a monomer. Slip Solution effortlessly glides PolyGel® Brand Hybrid Nail Enhancement into place for the perfectly shaped nail. Eliminates friction for drag free shaping. Does not activate curing.

1713004 120 mL - 4 Fl. Oz.
1713008 240 mL - 8 Fl. Oz.

SYNTHETIC BRUSH RESTORER

Revives brushes to help maintain the shape and integrity of the bristles ensuring a flawless application.

1713009 120 mL - 4 Fl. Oz.



POLYGEL® BRAND ACRYLIC DISPLAY

INCLUDES: Empty acrylic display, header and planogram strip.
DIMENSIONS: 23.625" x 12.875" x 10"

1732008 Empty



TUBE KEY

Easily remove product from the tube with the PolyGel® Tube Key.

1713000



POLYGEL® BRAND TRIAL KIT

INCLUDES: 60g - 2 Oz. Natural Clear; 120 mL - 4 Fl. Oz. Slip Solution; PolyTOOL™; Tube Key.

1720004



POLYGEL® BRAND FRENCH KIT

INCLUDES: (1 EACH) 60g - 2 Oz. Bright White and Light Pink; 240 mL - 8 Fl. Oz. Slip Solution; (1 EACH) 15 mL - 0.5 Fl. Oz. pH Bond, Foundation, Top It Off; PolyTOOL™; 2 Tube Keys.

1720002



POLYGEL® BRAND MASTER KIT

INCLUDES: 60g - 2 Oz. Natural Clear, Bright White, Light Pink, Cover Pink; 240 mL - 8 Fl. Oz. Slip Solution; (1 EACH) 15 mL - 0.5 Fl. Oz. pH Bond, Foundation, Top It Off; PolyTOOL™; Brush; 4 Tube Keys.

1720003



POLYTOOL™

Patent-pending PolyTOOL™ lets you slice and shape with just a flick of the wrist for effortless application.

1713001

gelish[®] Xpress[™] DIP N BRUSH

ADVANCED MONOMER COMPATIBLE
FORMULA FOR ENDLESS SERVICE
VERSATILITY

- Patent-pending formula infused with biotin and calcium
- Built-in Activator for faster applications
- Eliminates gummy, hardened brushes
- 21+ Day, chip-proof wear

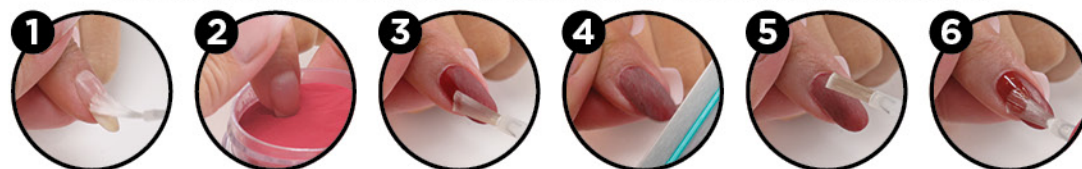


See pages 4-5
for color chart.

GORGEOUS NAILS IN LESS THAN 30 Minutes



Monomer Step By Step 1. Apply PRO BOND. 2. Apply Bead Onto Nail. 3. Shape with a 180 GRIT FILE
4. Buff with a 100/180 GRIT BUFFER 5. Apply NO CLEANSE TOP COAT 6. Apply NOURISH Cuticle Oil.



Dip Powder Step By Step 1. Cleanse, shape and PREP nails. 2. Apply Dip BASE COAT and dip into powder. Tap off excess. Repeat. 3. Apply Dip ACTIVATOR. 4. Apply Dip BASE COAT. Shape nails. 5. Apply Dip ACTIVATOR. Let dry to the touch. 6. Finish with Dip TOP COAT.



PREP

Prep balances the nail to neutralize pH and remove any surface oils for perfect adhesion and longevity.
1640001
15 mL - 0.5 Fl. Oz.



BASE COAT

Base Coat's unique formula ensures a fast dry time as well as full absorption with Dip Powder.
1640002
15 mL - 0.5 Fl. Oz.



ACTIVATOR

Activator provides quick polymerization of the powder with no heat and no discoloration.
1640003
15 mL - 0.5 Fl. Oz.



TOP COAT

Top Coat achieves the a high gloss shine and contains vitamin A and E to protect and strengthen the natural nail during wear.
1640004
15 mL - 0.5 Fl. Oz.



BRUSH RESTORER

Brush Restorer soften brushes. Just swap and soak 5-10 minutes or as needed between appointments.
1640005
15 mL - 0.5 Fl. Oz.



OMBRE COAT

Execute a full ombre look in minutes with no mess! Cures 30 seconds in LED Light; 2 minutes in UV Light.
1640006
15 mL - 0.5 Fl. Oz.



DIP BASIX KIT

INCLUDES: (1 EACH) 15 mL - 0.5 Fl. Oz. Prep, Base Coat, Activator, Top Coat, and Brush Restorer. 1620002



FRENCH DIP CONTAINER

The French Dip Container included in the system, creates perfect smile lines every time. The two round sides of the jar give you the choice between either Round or oval French smile lines making your application super-fast, easy and precise! 1620001



XPRESS DIP™ COLOR KIT

INCLUDES: (1 EACH) 15 mL - 0.5 Fl. Oz. Prep, Base Coat, Activator, Top Coat, Brush Restorer; (1 EACH) 23g - 0.8 Oz. Clear As Day, June Bride, Scandalous, 60 mL - 2 Fl. Oz. Nail Surface Cleanse, 100ct Wipes, and 100/180 Buffer. 1632000



XPRESS DIP™ FRENCH KIT

INCLUDES: (1 EACH) 15 mL - 0.5 Fl. Oz. Prep, Base Coat, Activator, Top Coat, Brush Restorer; (1 EACH) 23g - 0.8 Oz. Clear As Day, Arctic Freeze, Simple Sheer and Tutus & Tights, 60 mL - 2 Fl. Oz. Nail Surface Cleanse, 100ct Wipes, 100/180 Buffer and French Dip Container. 1632001



XPRESS DIP™ INTRO KIT

INCLUDES: (1 EACH) 15mL - 0.5 Fl. Oz. Prep, Base Coat, Activator, Top Coat, Brush Restorer; (1 EACH) 23g - 0.8 Oz. Prim-rose and Proper and Wonder Woman. 1632002



XPRESS DIP™ 24 FACING DISPLAY

Holds 3 pieces of each color. DIMENSIONS: 9.5" X 15" X 21.5"

1630019 Second Launch Display - Empty
(INCLUDES: 1 Empty Rack, Header and 4 Planogram Strips)



OMBRE INTRO KIT

INCLUDES: 15 mL - 0.5 Fl. Oz of Dip Ombre Coat and Top It Off; 1 each of Touch MINI LED Light. 1632003



OMBRE COAT & BLOOMING GEL DUO PACK

INCLUDES: 15 mL - 0.5 Fl. Oz of Dip Ombre Coat and Blooming Gel. 1121803





PROHESION™ NO SPILL ACRYLIC POWDERS

625 g



1691000
CRYSTAL
CLEAR



1691001
VIVID
WHITE



1691002
ELEGANT
PINK



1691003
STUDIO COVER
WARM PINK



1691004
STUDIO COVER
COOL PINK



NO SPILL REFILL

Polvo acrílico para esculpir
Poudre de sculpture acrylique
Polvo acrílico per scolpire

ELEGANT PINK
Acrylic Sculpting Powder

625 g - 22 Oz. Net Wt.



DIP N BRUSH

DIP N BRUSH NO SPILL POWDERS

330 g



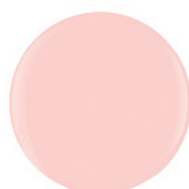
1640069
FAME
GAME



1640092
WATER
BABY



1640811
SHEEK
WHITE



1640812
SIMPLE
SHEER



1640819
GOSSIP
GIRL



1640830
BLACK
SHADOW



1640835
JUNE
BRIDE



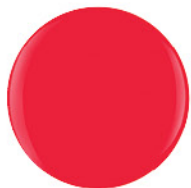
1640839
WATER
FIELD



1640842
GOOD
GOSSIP



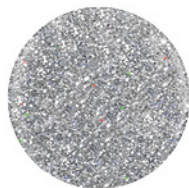
1640876
ARCTIC
FREEZE



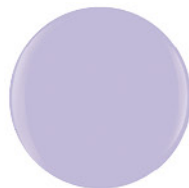
1640895
SHAKE IT TILL
YOU SAMBA



1640911
ALL TIED UP...
WITH A BOW



1640946
AM I MAKING
YOU GELISH?



1640997
CLEAR
AS DAY



1640998
TUTUS &
TIGHTS



liquid and powder

PROHESION SCULPTING POWDER & PROHESION SCULPTING LIQUID

PROHESION NAIL SCULPTING POWDER

ProHesion Nail Sculpting Powder is developed with the latest acrylic technology assuring high quality performance and an ultra fine, bubble free application. ProHesion Nail Sculpting Powder encompasses Cross Link Technology allowing strength and durability for the client while still maintaining the ability to self-level in application for the technician. This helps reduce filing time. With perfectly matched polymer brighteners that will eliminate any discoloration between liquid and powder.

01116	Crystal Clear Powder	28g - 1 Oz.
01117	Crystal Clear Powder	105g - 3.7 Oz.
01118	Crystal Clear Powder	660g - 23.28 Oz.
01113	Vivid White Powder	28g - 1 Oz.
01114	Vivid White Powder	105g - 3.7 Oz.
01110	Elegant Pink Powder	28g - 1 Oz.
01111	Elegant Pink Powder	105g - 3.7 Oz.
01112	Elegant Pink Powder	660g - 23.28 Oz.
01122	Studio Cover Warm Pink Powder	28g - 1 Oz.
01123	Studio Cover Warm Pink Powder	105g - 3.7 Oz.
01124	Studio Cover Warm Pink Powder	660g - 23.28 Oz.
01125	Studio Cover Cool Pink Powder	28g - 1 Oz.
01126	Studio Cover Cool Pink Powder	105g - 3.7 Oz.
01127	Studio Cover Cool Pink Powder	660g - 23.28 Oz.



PROBOND ACID FREE NAIL PRIMER

A gentle acid free preparation product for the natural nail. It will promote adhesion of acrylics & gels to the natural nail.

1140003	15 mL - 0.5 Fl. Oz.
1300000	6pc Display

DUAL COAT ARTIFICIAL NAIL SEALER

Designed to protect the nails from discoloration from UV rays. It is sure to reflect the healthy appearance of pink & white nails or enhance the bright colors of any acrylic. DUAL COAT will air dry in 90 seconds to a hard plastic finish on any type of artificial nail.

01237	15 mL - 0.5 Fl. Oz.
-------	---------------------



PROHESION NAIL SCULPTING MONOMER

ProHesion Nail Sculpting Liquid is custom formulated to perform with ProHesion Nail Sculpting Powder. It's an aggressive monomer developed with optimized hybrid molecules resulting in the strongest bond to the natural nail without the use of harsh acid primers whilst maintaining the ultimate flexibility and utilizing technologies to accommodate the most sensitive clients. It is developed to brighten and stabilize the color of the ProHesion Nail Sculpting Powder with Optical Enhancers and has unique monomer technology that provides exceptional workability for perfect applications, delivering exceptional workability for the professional while creating the strength and durability necessary for the everyday client.

01104	3,785 mL - 1 gal (Tech Pack)
01105	59 mL - 2 fl oz
01106	120 mL - 4 fl oz
01107	240 mL - 8 fl oz
01109	960 mL - 32 fl oz



NAIL FORMS FOR ACRYLIC & GEL ENHANCEMENTS

Perfetto Nail Forms are designed to fit all nail types. Sure to hold in place and provide the perfect fit for beautiful nails. They provide consistent c-curves and have imprinted guidelines for consistent length and shapes. The locking tabs provide a controlled fit on all finger sizes, Perfetto Forms are versatile for all nail types and are sure to make sculpting easier than ever.

01239	100 Count	White
01208	300 Count	White



GLASS DAPPIN DISH

The perfect accessory for any liquid and powder application. This sanitary glass dish with matching lid holds monomer liquid, liquid removers or even powders. 01395



SECURE NAIL ADHESIVE

Brush-on Nail Resin
ProHesion Secure Nail Adhesive brushes on smoothly and sets in 10 seconds. 01183

ACRYLIC BRUSHES

This series of brushes are hand crafted using the finest hair available. Our Designer Series brushes have a firm belly for the perfect application for all types of procedures, and a flat oval shape that tapers to a fine point for the perfect smile line application.

SIZE 9 - 2 PIECE

Hand crafted with the finest hair available, the firm belly allows for the perfect acrylic application. The fine-point on the brush picks up the perfect amount of acrylic powder and monomer, while the cap maintains the integrity of the brushes. **01216**

PRO 9 - GRIP HANDLE

The same brush as the Gelish® Size 9 - 2 Piece Brush, but with a wooden handle to allow for a softer grip. **01214**

MAESTRO PRO OVAL

Provides easy application of 3D nail art. Designed for optimal performance and durability. Strength, flexibility, and absorbency of the brush provide the highest standard of nail designs possible. Acetone resistant handle. **01219**



PROHESION LIQUID & POWDER SAMPLE KIT

INCLUDES: 60 mL - 2 Fl. Oz. Sculpting Monomer; (1 EACH) 7g - 0.25 Oz. Elegant Pink Powder, Crystal Clear Powder, Vivid White Powder; 20pk Nail Forms.

01102

PERFETTO NAIL TIPS

ProHesion Perfetto nail tips are made of 100% Virgin ABS plastic for maximum durability and longevity.

01184	Perfetto Clear Tips	500 Count
01185	Perfetto White Tips	500 Count
01186	Perfetto Natural Tips	500 Count



PROHESION LIQUID & POWDER TRIAL KIT

INCLUDES: 60 mL - 2 Fl. Oz. Sculpting Monomer; (1 EACH) 7g - 0.25 Oz. Elegant Pink Powder, Crystal Clear Powder, Vivid White Powder, Radlans Colored Powder; (1 EACH) 15 mL - 0.5 Fl. Oz. pH Bond, ProBond; 20pk Nail Forms.

01101



PROHESION LIQUID & POWDER MASTER KIT

INCLUDES: 120 mL - 4 Fl. Oz. Sculpting Monomer; (1 EACH) 15 mL - 0.5 Fl. Oz. pH Bond, ProBond, Dual Coat, Nourish; (1 EACH) 28g - 0.8 Oz. Elegant Pink Powder, Crystal Clear Powder, Vivid White Powder; 150/150 File, 180/180 File, 100/180 Buffer, 220/280 Buffer, 400/4000 Eco Shiner, 240/240 Thin Wooden File; 100pk Nail Forms. Pro 9 Brush

01100



professional tools

IMPLEMENTS, C-CURVES, MARBLING, FILES & BUFFERS



1 STIR STICK - CLEANER
Used to remove excess gel from the cuticles, this 2-sided stir stick is perfect for mixing and cleaning as well. **01903**

2 ECO PUSHER - CUTICLE PUSHER & REMOVER
Perfect for pushing back the cuticles, the Eco Pusher also removes any excess tissue and cleans up the excess skin. **01904**

3 TWEEZER - PINCHER STICK
Assists with creating the perfect C-Curve, these ergonomically designed tweezers can also be used to apply small beads, sequins, rhinestones and studs for nail art. **01902**

4 SPOON - SPOON PUSHER & CUTICLE REMOVER
This contoured pterygium remover makes for more precise cleanup of the cuticles. It can also be used as a cuticle pusher. **01901**



ACCESSORY KIT

INCLUDES: 50 Tabs and a Cuticle Pusher.

04098 KIT

C-CURVE STICKS

Gelish® C-Curve Sticks help create the perfect c-curve with gel or acrylic applications. These double ended dowels are specifically designed to create c-curves in 6 different shapes. The Gelish® C-Curve Sticks are stainless steel, color coated, embellished with beautiful rhinestones and come with a protective carrying case. Use with any liquid & powder system or Gelish® Hard-Gel to create even, perfect c-curves.

01907 6 PIECE



MARBLING TOOLS

Five double ended tools giving you 10 different sizes and effects. Use with any colored gels, acrylics or polish design applications. Perfect for marbling and etching. Blend colors, create zigzags and swirls; the different sized heads provide a variety of uses to create interesting nail art patterns and designs.

01906 5 PIECE

FILES & BUFFERS

Gelish's file collection is manufactured with superior paper resulting in a long lasting file and a much easier application for the technician. These files are going to last three times longer than the competitors files. The Gelish® files have a custom shape for fine detail cuticle work and a wider base for surface filing.



150/150 GRIT FILE

Shapes the nail enhancement and is used for quick filing & surface smoothing. **01209**



180/180 GRIT FILE

Used for refining and finishing any artificial nail surface. **01238**



240/240 GRIT THIN WOODEN FILE

For shaping the natural nail. **01312**



100/180 GRIT BUFFER

Bevels the surface of the artificial nail, prepares the nail for high shine or gel finishes. **01210**



220/280 GRIT BUFFER

Finish buffs the nail and removes all demarcations. **01211**



400/4000 ECO SHINER

2 sided high shine buffer that will create the perfect high shine finish. **01212**



CHANGE THE WAY YOU WORK

Stop using yesterday's speed dial. Start using programmable one touch launch presets. The Gelish Go File IQ features Smart Torque Technology™. 23% more torque than generation 1. Pressure sensing technology react in 0.08 seconds to maintain consistent powder through resistance. Features include 25,000 RPM, Dial RPM's up, down or pause on the fly, mobile convenience, and a 2 year limited warranty program.

1168226	US	1168227	UK
1168228	EU	1168229	AU



GELISH GO FILE HYBRID ELECTRIC FILE

POWER MEETS MOBILITY.
MORE POWER. MORE BATTERY
LIFE. MORE SERVICES.

1168008	US
1168009	UK
1168010	EU
1168011	AU



GO FILE™ DISPLAY

Holds the Gelish® Go File™ and all 12 styles of the Gelish® Go File™ Bits. DIMENSIONS: 10" x 15" x 7"

1168063	US
1168064	UK
1168065	EU
1168066	AU

GO FILE™ BITS

The Gelish® bits have up to 3 TIMES the sharpness and corrosion resistance compared to most of the bits on the market.

- Made in the USA • 100% Carbide Tungsten Metal
- Titanium Coating • 2 Way Cut • Campher Bit Safety

1168019	3/32" Loxo Mandrel
1168020	3/32" Extra Coarse Volcano
1168021	3/32" Extra Coarse Volcano Radius
1168022	3/32" Cuticle Cleaner Ball
1168023	3/32" Under Nail Clean Small
1168024	3/32" Fine Large Barrel
1168025	3/32" Coarse Large Barrel
1168026	3/32" Super 2X Coarse Large Barrel
1168027	3/32" Medium Smooth Round Top Large Barrel
1168028	3/32" Super 2X Coarse Smooth Round Top Large Barrel
1168029	3/32" Fine 3-In-1 Safety Edge Angled and Tapered
1168030	3/32" Coarse 3-In-1 Safety Edge Angled and Tapered





ULTRA SLIM & POWERFUL, COMFORT DRIVEN • GO-ANYWHERE



VORTEX PORTABLE & RECHARGEABLE NAIL DUST COLLECTOR

Gelish' Vortex design blends state of the art technology, convenience and economy in a supercharged, go-anywhere cordless and rechargeable dust collector. The new standard in salon comfort - providing clean, dust-free air is better for you and your clients! In fact, dust exposure can aggravate respiratory conditions, which may cause some clients to avoid nail salons completely. Eliminate airborne dust with the Gelish' VORTEX™ Portable Nail Dust Collector for cleaner air and a healthier salon environment! Our VORTEX™ TECHNOLOGY has a smart, space-saving design with unparalleled airborne particle and dust collection, delivering cleaner air for you and your clients without compromising the speed of your e-file service.

- Ultra Slim, space-saving design — Just 2.16" high.
- Supercharged Vortex-powered fan combines quieter operation with maximum dust removal.
- Integrated flip-stand provides an elevated working angle for maximum comfort.
- All day strong - full day of client use, both plug-in and/or portable.
- Designer magnetic grille makes removal and sanitation a breeze.
- Removable & washable filters provide the most economical usage.
- A built in Power Indicator Light signals remaining power: BLUE - 100% to 30% power; RED - Less than 30% power (Time to charge!).
- Advanced circuitry eliminates inconsistent power levels when used in battery mode.

1168209 - US

1168210 - UK

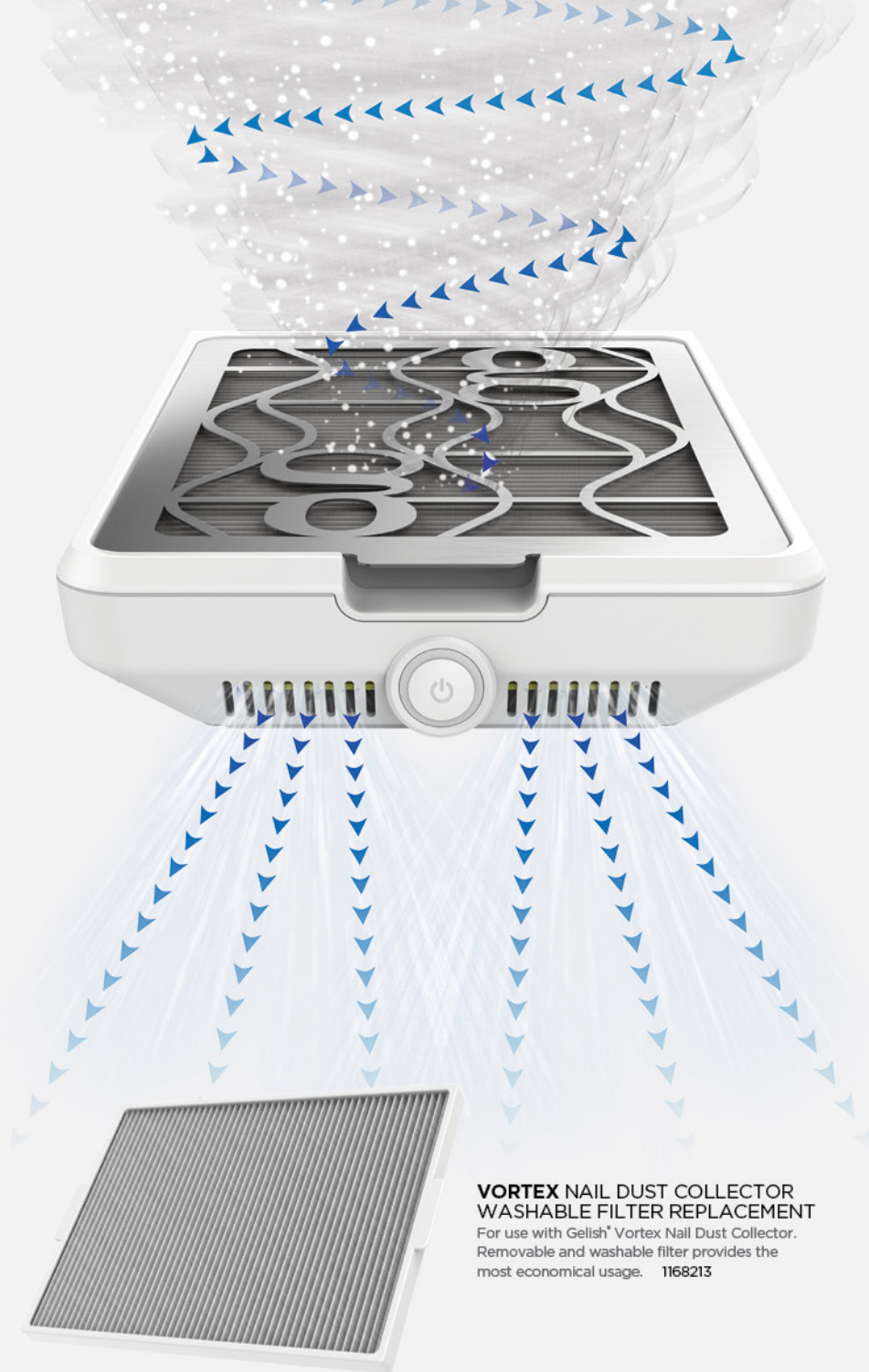
1168211 - EU

1168212 - AU

A BUILT IN POWER INDICATOR LIGHT SIGNALS REMAINING POWER:



BLUE 100% to 30% power
RED Less than 30% power
(Time to charge!)



VORTEX NAIL DUST COLLECTOR WASHABLE FILTER REPLACEMENT

For use with Gelish' Vortex Nail Dust Collector. Removable and washable filter provides the most economical usage. 1168213

LED lights

PROFESSIONAL, HIGH PERFORMANCE GEL CURING LAMPS



LED 18G UNPLUGGED LED GEL CURING LIGHT

GET UNPLUGGED. The ultimate performance in mobile curing has arrived! Whether moving from nail table to pedicure station — or taking your skills on the road — now you're ready to roam with the innovative Gelish® 18G UNPLUGGED™ Professional Mobile LED Light! Designed to outperform the rest, 18G UNPLUGGED™ is the first LG lithium battery powered LED light engineered using Gelish's® exclusive Intelligent Power Assist - advanced circuitry that eliminates inconsistent power levels when used in battery mode. From the moment the Gelish® 18G UNPLUGGED™ Professional Mobile LED Light is on battery, power is managed and monitored with real-time power levels made visible by our large display. And, the Gelish® 18G UNPLUGGED™ Professional Mobile LED Light comes fully loaded with all the gold-standard, high-performance features you love about the Gelish® 18G Professional LED Light, including Comfort Cure, plus exclusive technology designed to meet the demands of mobility!

- Intelligent Power Assist™
- 36 Watts of Power
- Rechargeable Lithium Battery
- Built-In Handle
- Real Time Battery/Power Level
- Comfort Cure™ Setting
- SafeLight™ Technology
- Patented eyeShield™
- Countdown Feature
- Cures All Five Fingers And Toes
- Scratch And Acetone Resistant
- High Intensity Diamond Reflectors
- Magnetic tray for easy sanitizing and pedicure services
- No slip, pedicure friendly buttons
- Meets standard safety compliances world wide

1168012 110V US
1168014 230V UK

1168013 220V US
1168015 240V UK



LED 18G PLUS WITH COMFORT CURE™ HIGH-PERFORMANCE LED GEL CURING LIGHT

The Gelish® LED 18G Plus with Comfort Cure™ Gel Light is a scientifically-engineered, precisely calibrated authentic LED (Light-Emitting Diode) light of exceptional quality. It is specially designed for rapid, efficient gel curing, particularly for the high-performance Gelish® Soak-Off Gel Polishes. Gelish® LED 18G Plus with Comfort Cure™ Gel Light - The ultimate professional salon curing experience.

- The Comfort Cure setting builds LED powder over a 60-Second period which helps mitigate heat spikes for sensitive clients
- 60-Second setting
- Patented eyeShield™ (limited light exposure) US PATENT 8,739,431
- SafeLight™ Technology
- Illuminated comfort pad
- Scratch and acetone resistant
- Magnetic tray for easy sanitizing and effortless pedicure services
- The latest high efficiency bulbs
- Digital touch screen display
- Countdown feature
- On-Off feature
- Meets standard safety compliances world-wide

1168000 110V US
1168002 230V UK

1168001 220V EU
1168003 240V AU



PRO LED GEL CURING LIGHT

The 30 Watt, Gelish® Pro LED Light effectively and efficiently cures Gelish® Soak-Off Gel Polish. Gelish® Pro Light's bulbs will not ever need bulb replacements with up to 50,000 hours of performance guaranteed, and consistent power output that does not degrade over time. The Pro LED Light is the ultimate package of curing power and professional convenience.

- Cures all five fingers
- Lightweight, ergonomic design
- Removable tray
- 1 Year Warranty
- Pedicure friendly
- Autosensor
- Acetone resistant

1168087 110V US
1168088 230V UK

1168089 220V EU
1168090 240V AU



LED 18G UNPLUGGED REPLACEMENT BATTERY

The replacement battery allows you stay on the go without having to recharge your current battery.

1168017



18G MAGNETIC REPLACEMENT TRAY

The replacement trays are interchangeable to sanitize between clients. Reflects light from bulbs for efficient, maximum exposure. Magnetic for quick and easy replacement. Finger stopper to guide for proper hand placement. Acetone resistant. Stainless Steel.

1168238 - 18G Unplugged

gelish® application & removal

SHAPE, SMOOTH, REFINE, BUFF, SHINE & FINISH



apply

STEP 1:

Sanitize the nails and your clients' hands. Push back the cuticle.

STEP 2:

Clean the surrounding nail plate.

STEP 3:

Shape the natural nail using your Gelish® file of choice (recommended: Gelish® Wooden File).

STEP 4:

Gently remove the shine using the 100/180 Buffer.

STEP 5:

Remove the dust and wipe the nail with Gelish® Cleanser using a Wipe It Off™ lint free wipe.

STEP 6:

Apply Gelish® pH Bond to the nail plate.

STEP 7:

Apply Gelish® Foundation Gel in a thin application and seal the edges of the nail.

STEP 8:

Place hand in the Gelish® LED 18G Light for 5 seconds or UV Light for 1 minute.

STEP 9:

Apply Gelish® Soak Off Gel Polish of Choice in a thin application from cuticle to free edge. Be sure to seal the edges of the nail. Place hand in the Gelish® LED 18G Light for 30 seconds or a UV Light for 1 minute for lighter colors or 2 minutes for darker colors. (For darker coverage, repeat this step once.)

STEP 10:

Apply Gelish® Top It Off Gel Sealer from cuticle to free edge using a thin light application. Place hand in Gelish® LED 18G Light for 30 seconds or UV Light for 2 minutes.

STEP 11:

Cleanse inhibition layer with Gelish® Nail Surface Cleanse and Wipe It Off™ lint-free wipes.

STEP 12:

Massage Gelish® Nourish Cuticle Oil to the skin surrounding the nail.

VISIT GELISH.COM FOR MORE STEP-BY-STEPS & VIDEOS

remove

STEP 1:

Break top seal by gently roughing the surface with 100/180 Grit Buffer and remove shine.

STEP 2:

Saturate cotton or nail wipe with Gelish® Artificial Nail Remover. Place cotton or wipe on foil. Wrap nail with foil. Soak for 15 minutes.

STEP 3:

Remove foil. With orangewood stick, gently remove any remaining gel. Be careful not to press into the nail.

STEP 4:

Lightly buff nail surface with a 220/280 Buffer.

STEP 5:

Massage Gelish® Nourish Cuticle Oil into skin surrounding nail plate.



salon support

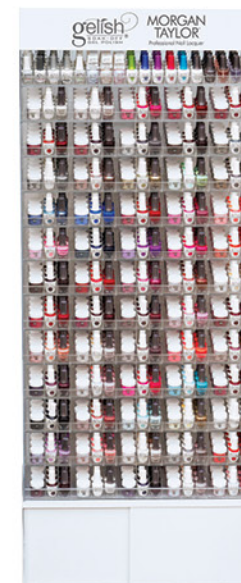
MAKE YOUR SALON GELISH!



MEGA RACK DISPLAY

Merchandise your favorite Gelish® and Morgan Taylor® shades with the Mega Rack Display. SINGLE MEGA RACK DIMENSIONS: 41" x 79" x 23" • DOUBLE MEGA RACK DIMENSIONS: 82" x 79" x 23" • WEIGHT: 210 lbs. each (270 lbs. including the pallet)

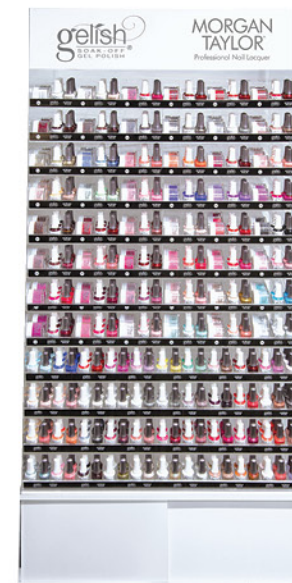
1138014 Left
1138015 Right
1138018 Planogram Strip PPK



EMPTY MINI MEGA RACK DISPLAY

Merchandise your favorite Gelish® and Morgan Taylor® shades with the Mini Mega Rack Display. DIMENSIONS: 28.5" x 73.5" x 18.5" • WEIGHT: 160 lbs. each (210 lbs. including the pallet)

1138011 Empty
(INCLUDES:
Empty Rack &
Planogram Strips)



EMPTY TRIO OVERFLOW RACK DISPLAY

Merchandise your favorite Gelish® and Morgan Taylor® shades with the Trio Overflow Rack Display. DIMENSIONS: 41" x 74" x 23". WEIGHT: 265 lbs. each

1138016 Empty
(INCLUDES: Empty Rack
& Generic Planogram Strips)

EMPTY DUO RACK DISPLAY

Merchandise your favorite Gelish® and Morgan Taylor® shades with the Duo Rack Display. DIMENSIONS: 41" x 74" x 23". WEIGHT: 210 lbs. each (270 lbs. including the pallet)

1138019 Empty
91-1138019 Planogram Strip PPK



salon support

MAKE YOUR SALON GELISH®!



GELISH® PAINTED NAIL BOARD

Contains 6 painted complete Gelish® color range nail boards. Features all Gelish core shades. Labels indicate which shades match to Gelish® Dip & Morgan Taylor® Lacquer. **1180006**

GELISH®/MORGAN TAYLOR® TRIO PAINTED NAIL BOARD

Contains 4 painted nail boards of Gelish®, Gelish® Dip and Morgan Taylor® matching shades. **1180012**

GELISH®/MORGAN TAYLOR® UNPAINTED NAIL BOARD

Contains 4 unpainted nail boards. Paint your custom palette - up to 144 swatches. Great for showing collection shades & nail art. Write names or item numbers directly on label. **1180007**

48 PIECE WALL RACK DISPLAY

Merchandise your favorite Gelish® shades with the 48 Piece Wall Rack. DIMENSIONS: 21.75" x 22.5" WEIGHT: 5 lbs.

01946 Empty



EMPTY SMALL SEASONAL TRIO DISPLAY

Merchandise your Gelish®, Gelish® Xpress Dip™ and Morgan Taylor® trios for upcoming seasonal collections. DIMENSIONS: 13.5" x 18" x 11.25". WEIGHT: 9 lbs.

1138010 Empty



360 PIECE GEL INLINE DISPLAY

Merchandise your favorite Gelish® shades with the 360 Piece Display. Includes empty rack and header. DIMENSIONS: 24.5" x 30" x 10"

1100216 Empty





SAWAYA INTL LLC

VS4, Roda Al Murooj Complex,
Omlaat Street Dubai, UAE.

☎ +971 509 0017 09

☎ +971 437 999 39

✉ Channa@sawaya-intl.com



8x
WINNER!



8x
WINNER!



8x
WINNER!



2x
WINNER!

We take pride in knowing that we provide the highest quality products in the nail industry. That's what you deserve. And we will continue to uphold that quality, as you are enriching your life, the lives of your clients, and the success of your salon.

By your votes, you have officially made us the best.
We couldn't have done it without you.